



Supported by
**ARTS COUNCIL
ENGLAND**

City of Bradford MDC
www.bradford.gov.uk



*unlock
new
possibilities*



create • inspire • connect • engage • develop

Artworks Creative Communities

Annual Review – April 2010 to March 2011

www.artworkscreative.org.uk

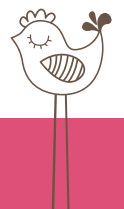
Artworks Creative Communities is a Company Limited by Guarantee Registered
in England and Wales No. 4137321 Registered Charity No. 1095583





A hands on approach to creating change

The Artworks Team share
a passion for community
and a belief in the power
of arts and creativity



A Message from the Board

Artworks Creative Communities has worked hard over the last year to maintain its position as a leading arts provider.

We have demonstrated our ability to meet the diverse needs of our growing client group and established new and improved ways of collating evidence and information to demonstrate this need and how participation in the arts can improve health and wellbeing.

Artworks has been recognised for its role in participatory arts and have received renewed funding from the Arts Council England as a National Portfolio Organisation. In uncertain times it is testament to the value that is placed on our work that we have received this funding and Artworks will ensure that this investment is used to increase the variety, accessibility and impact of our work for the communities of Bradford and beyond.

2011/12 is a very exciting time for Artworks as we will be moving to new premises in the Delius Arts and Cultural Centre, Bradford. New opportunities that this brings for Artworks are an amazing venue to house our creative projects, a home for our Youth Arts Academy, and the potential income from hiring this unique city centre building. The Delius Arts and Cultural Centre will be an accessible place to come and experience the wealth of local and national creative talent within a building which is such an important part of Bradford's history and heritage.

A big thank you to everyone involved with Artworks for all of the hard work and dedication they have invested this year. Without this Artworks would not be the strong and vibrant organisation that it is.

The Board greatly look forward to being a part of the exciting new chapter that lies ahead for Artworks in the coming year.

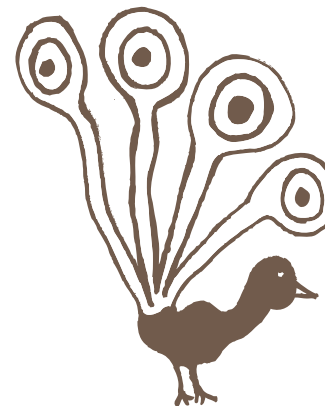
A Message from the Team

This year has been an extremely busy one for all of the Artworks Team with the development and delivery of such brilliant projects as Hidden Voices, Creative Together, the Youth Arts Academy and our training programme.

All of the Team have pitched in and had the opportunity to return to some hands-on art activities by creating and making at the Saltaire Arts trail, Bradford Mela and the Teddy Bears' Picnic, to name a few.

Thank you to our fantastic Board of Trustees and all of our friends, supporters, partners and funders for enabling us to continue our work and helping us develop and grow as a team and as an organisation.

We look forward to developing further artistic endeavours in our new, much more accessible home and to working with our friends, partners and the wider community to ensure that our good work continues. We also look forward to developing the Delius Arts and Cultural Centre as a hub for Bradford's creative community. Next year looks sure to be a very exciting time for us all.



Arts and Health

2010/11 has seen arts and health go from strength to strength. Our contract with NHS Bradford & Airedale has this year supported projects with eight partner organisations across Bradford District. This included work with KAWACC young people in Keighley on substance misuse, work with gypsy traveller women in Holme Wood on general health, and the production of a presentation on how to work with visually impaired groups with Bradford Association for Visually Impaired People. We also created some fabulous artwork through four mental health projects with Sharing Voices, MIND in Bradford, Supermums in Allerton and Bradford Cyrenians.

We have continued our work for the Care Quality Commission (CQC) running a Re-Ignite training course on collecting feedback for members of the SpeakOut Network and filming and producing a video on this same network.

We were lucky enough to receive funding from Bradford Council to run a mental health project with service users at Lynfield Mount Hospital which has added to our increasing body of knowledge and experience in this area and was an extremely successful project.

Finally, Artworks was extremely proud to be awarded a grant from the Media Trust to continue our work with the Homeless Community of Bradford through our Hidden Voices Project. You can read more about this on pages 12 and 13.

“I feel really assertive, as if I can speak out more.”

Participant (BAVIP)



“Thank you. A really great couple of days. Talented and knowledgeable trainers. Very good at making each person feel valued.”

Participant (CQC Training)

“It keeps me sane. I can express myself. The poems were deep thinking. I didn’t know I could go deep like that.”

Participant (Supermums)

“This is the most engaged I’ve seen them.”

Centre Manager (KAWACC)

“I never thought I’d be able to do this. I’m doing things I’ve never done before.”

Participant (MIND)



Images: (top) Supermums artwork, (bottom) Teddy Bears’ Picnic



Commissions

The year has seen an exciting range of commissions which showcase the wide range of our work. We started the year working with Sure Start in Halifax, carrying out creative consultation and producing a user led DVD highlighting their services. Continuing the health theme we delivered creative consultation for Calderdale LINKs on services in local areas and worked with physically disabled residents of Wagtail Close Care Home in Buttershaw producing a stunning banner and some extremely moving poetry. We made our annual visits to the Bradford Mela and the Saltaire Arts Trail providing great creative workshops for little ones and their adults, then rounded off the year with a commission for Bradford Council to design and produce mosaics and stone carvings for the Holme Wood Story Garden next to Holme Wood Library, Bradford.



Image: Wagtail Close Care Home banner



Images: Holme Wood Story Garden stone carvings



Training

This year Artworks has continued to build on our successful Ignite programme, bringing the best in creative training right into the heart of communities. Our professional development training for artists has been enhanced by incorporating the nationally recognised PTLLS qualification (Preparing to Teach in the Lifelong Learning Sector) into our C3 programme for aspiring community artists, ensuring that they can access this important qualification in a context that is tailored to their creative skills.

At Artworks we value the benefits of working in partnership, ensuring that our programmes reach as widely as possible, and that the expertise built up by ourselves and our partners can be used to develop best practice models in community and professional development.

“Once again, thank you so much for letting me onto the course. I really truly feel it’s changed my life!! I know that sounds really cheesy, but in terms of giving me direction, confidence and the knowledge that I’m on the right path in life, it has been invaluable.”

Participant (C3 Training)

“The course is proving to be more beneficial than I realised at first, it has given me more confidence and self-awareness and greater understanding and awareness of other people’s social issues.”

Participant (C3 Training)



Images: C3 Ignite Bitesize Training



Youth Arts

Artworks delivered a wide range of Youth Arts projects last year:

Now in its second year the Creative Together Family Learning programme continues to work with groups across Bradford, Calderdale, Kirklees and Leeds to encourage families to enjoy learning together. This year projects have run with many partner organisations and have included a project to bring Lads and Dads together at Laisterdyke Business and Enterprise College to create a film using sculpture and animation as the artforms. We also worked with artists Irene Lofthouse and Cassy Oliphant to use storytelling, puppetry and arts and crafts with Bradford Action for Refugees.

Artworks worked as a Creative Agent on the Cape UK Creative Partnerships project with two West Yorkshire schools. At Ebor Gardens Primary school in Leeds the project worked with artists Derrie O'Sullivan and Philip Charles to look at links between number patterns, and rhythms in music and architecture, creating original musical and architectural compositions and models in the process. Carlton Bolling College in Bradford hosted drama artist Dan Mallaghan and video artist Marcus Lee who worked together on a project that 'buddied up' Year 7 pupils and sixth form students to research and creatively map the pupils' local area and contrast these with other, more rural areas of Bradford District.

Unfortunately, 2010/11 saw the end of our work on the Youth Music Mentors programme. During the time we have worked on the project young people have organised and taken part in activities including composing and recording music, broadcasting radio shows, delivering workshops and public showcase events.

As part of the legacy of the project young people worked with a video artist to create a number of short films to pass on the knowledge they have gained by being involved in the project to others who may be interested in creating music themselves.

With so much talent developed and exposed through the project we get the feeling we'll be seeing a lot more of some of our former Youth Music participants in the future.



Image: still from Youth Music Mentors video



Hidden Voices

'Hidden Voices' was a continuation of our work with people who have experienced homelessness, for which we were proud to be awarded Highly Commended Status from the Charity Awards 2010.

The project aimed to:

- Give a voice to the homeless community of Bradford through digital and other media
- Raise awareness of homelessness issues
- Challenge stereotypes around homelessness

Hidden Voices grew from an idea put forward by service user Gary Staniforth who, having been homeless himself, wanted to highlight the plight of the so called 'hidden homeless'.

Through this project we have created billboards, a film, animations, poetry and prose, and are currently producing a book. Participants gained confidence through learning new skills in IT and digital media, creative writing, photography and animation. Bradford College students mentored participants and produced further billboard images as part of their degree work.

'Hidden Voices' was awarded funding by the Media Trust and was a partnership project with Bradford College, National Media Museum, Bradford Action Community Care, Supporting People, and Horton Housing with additional funding from the Cooperative Fund.

The project has been extremely successful, gained extensive press coverage, featured in a community channel film and is leading to further work in this area.



'Hidden Voices' is a continuation of the 'Forgotten' homelessness project, awarded Highly Commended Status from the Charity Awards in 2010.



Images: Hidden Voices billboard campaign



Finance and Monitoring

Income & Expenditure

Total income: £397,470

Total expenditure: £392,104

Surplus: £5,366

Projects Statistics

Total projects: 49

Total participants: 2,236

Participant Breakdown

Male: 43%

Female: 57%

White: 82%

BME: 18%

Disabilities: 6%

0-4: 6%

5-16: 48%

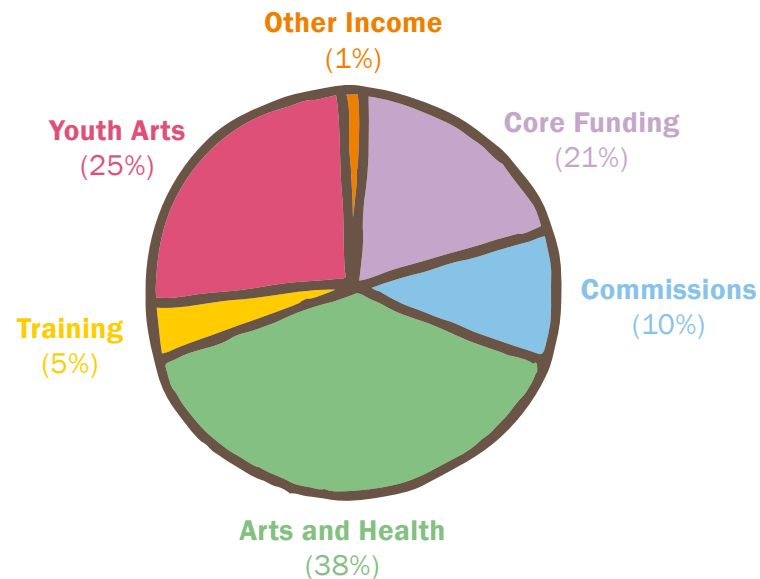
17-19: 3%

Adult: 43%

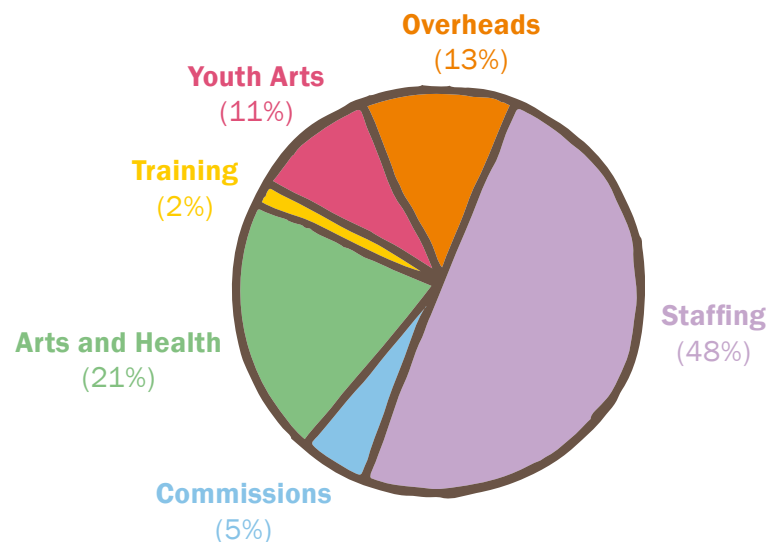


Note: Not all projects are monitored in the same way, therefore these figures do not represent an exact breakdown of participants but are a guide to Artworks' activities.

Income



Expenditure



Project Outcomes

2010/11 has seen changes to our evaluation and monitoring systems which have greatly improved the way in which we are able to measure the impact of our projects.

We are now able to present a rich variety of evaluation information including both qualitative and quantitative feedback and impact measurement. As well as one-to-one interviews with participants, a range of questions like the ones shown are asked, and the results collated, to provide quantitative evaluation statistics. For areas of work such as Arts and Health, a number of standard questions are asked in addition to project specific questions in order to provide evaluation results that cover whole areas of work as well as individual projects. This enables us to measure the effectiveness of our work on different levels and provides statistics that can be used for Social Return on Investment (SROI) calculations which we are slowly introducing across the organisation.

The first project we have produced SROI impact measurements for (which allows us to gauge the added value our projects provide) is the Hidden Voices project. This gave a ratio of 1:1.6 meaning for every £1 put in we provided £1.60 worth of value.

Participant feedback after projects

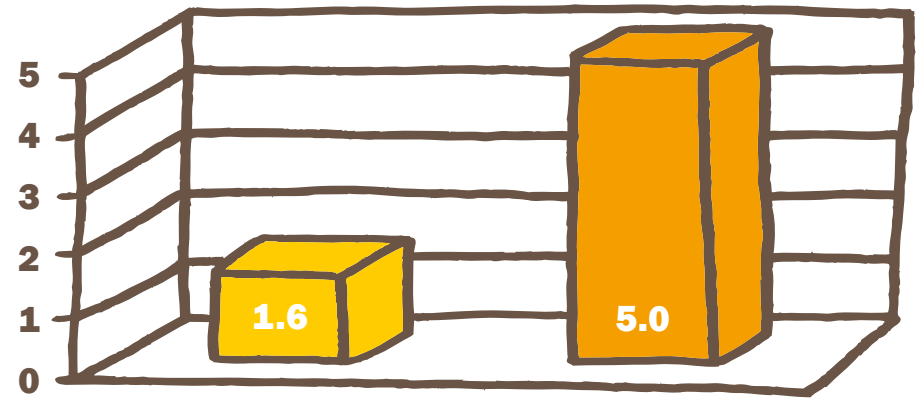
“I never used to communicate with people. Coming here has got me out, I wouldn’t have dreamed of going out with another group of people.”

Participant (GT&R)

“I’ve started painting at home so on an evening, instead of not doing anything and feeling down, I paint.”

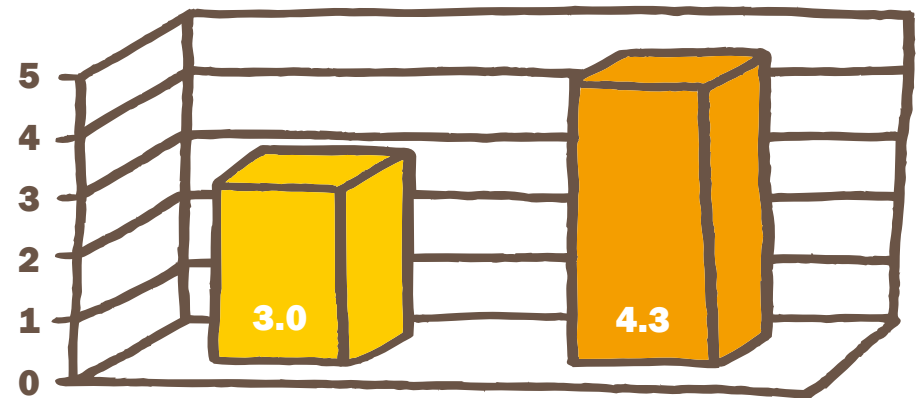
Participant (Supermums)

Gypsy, Traveller and Roma Arts Project (GT&R)





On a scale of 1 to 5 (5 being the most) participants were asked ‘how in control they felt’ at the start and end of the project.

Supermums Project



On a scale of 1 to 5 (5 being the most) participants were asked ‘how confident they felt’ at the start and end of the project.

 Average participant score at start of project
 Average participant score at end of project



The Artworks Team

Staff

Attia Marban (left August 2010)
Cat Thom (left March 2011)
Ed Hall (left December 2010)
Estelle Cooper
Ged Walker
Jessica Penrose
Steve McCabe
Susan Eardley
Suzy Russell
Toby Thomas

Board

Adrian McDonald
Geoff Roberts
Georgios Vournas
Kath Nuttall
Patricia Drake
Robert Stubbs

Volunteers

Andrew King
Anisha Mistry
Cathy Chamberlain
Claire Kearns
Dean Joseph
Emily Gibbin
Gary Staniforth
Jim Souper

Kath Shackelton
Katie Louran
Laura Rivest
Lloyd Thompson
Lucy Wileman
Matt Lamont
Moaz Khalif
Poeyan Chan
Rachel Morris
Robert Newbury
Samina Khadam
Sara Jackson
Sarah Harvey Richardson
Shaun Bonnett
Silent Kumbala
Victoria Foggin

Artists & Facilitators

Adam Mileusnic
Amanda Hulse
Amy Hield
Anna Green
Anni Raw
Annie Berrington
Ben Goodwin
Ben Holden
Bryan Tweddle
Cassy Oliphant
Cat Thom

Claire Rookes
Crank It Up
Daniel Mallaghan
Danny Carroll
Dawn Todd
Derrie O'Sullivan
Estelle Cooper
Frances Taylor
Ged Walker
Helen Bowcock
Helen Tanner
Ian Taylor
Irene Lofthouse
Jane Dale
Jay Morgan
Jessica Penrose
Karen Knox
Kath Shackleton
Larna Campbell
Lefteris Heretakis
Lucas Stephens
Magicbean Productions
Marcus Lee
Melanie St. Clair
Mez Galaria
Mick Sugden
Morwenna Catt
Noel Watkins
Paul Holmes

Pavan Sembi
Philip Charles
Pippa Julings
Rebecca Strain
Reel Street Productions
Remya Maypalli
Rick Shipley
Rosie Spencer
Sandra Whyles
Sarah Hope
Siobhán Mac Mahon
Sue Walpole
Suzy Russell
Toby Thomas
Trish Cooke
Urban Circus Arts
Victoria Kendall
Vidula Shukla
Viv Owen
Zane Whittingham
Zoom Animation

Artworks extends heartfelt thanks to all our board members, volunteers, funders, partners, artists and participants for their support over the last year. We look forward to working together in the future.



Acknowledgements

Partners & Supporters

Action for Business
Alistair Bamford
Anni Raw
Arts Council England
Barnardo's: Seen and Heard Project
Born in Bradford
Bradford Action for Refugees
Bradford Alliance on Community Care
Bradford Association of Visually Impaired People
Bradford College
Bradford Community Broadcasting
Bradford Community Environment Project
Bradford Cyrenians
Bradford Deaf Centre
Bradford Libraries
British Waterways
Business Link
Calderdale LINK
Carlton Bolling College
Carrwood Primary School

CBMDC: Integrated Youth Support
Chapelton Children's Centre
Communityworks
Ebor Gardens Primary School
FABRIC
Farcliffe & Lilycroft Children's Centre
Friends of Buck Wood
Holme Wood Activities Centre
Holme Wood Library
Horton Housing Gateway Service
Horton Housing Training Centre
Idle C of E Primary School
Immanuel College
Impression UK
Kala Sangam
Keighley Association Women and Children's Centre
Kirkgate Community Centre
Kirklees Youth Offending Team
Kirklees Youth Service
Laisterdyke Business and Enterprise College

Lawrence Schofield
Lilycroft Nursery
Lynfield Mount Hospital
Manningham Healthy Living Initiative
Media Trust
Mind in Bradford
Mind the Gap
National Media Museum
Oasis Project
People in the Park
PiPeLine Productions
Prime Sight
Reel Street Productions
Ryecroft Primary School
Saltaire Arts Trail
Sarah Dunwell, Create Leeds
Schofield Sweeney
St Edmund's Nursery School and Children's Centre
St. Christopher's Church, Holme Wood
Streets Ahead Holme Wood
Supermums
Supporting People

Sure Start North & East Halifax
Taleem Centre Youth Group
Thackley Urban Village Project
The University of Central Lancashire
The Young Men's Christian Association
Thornton Grammar School
Together Women Project
Trescom
Wagtail Close
Youth Music Mentors



Acknowledgements

Funders

Arts Council England

**Arts Council England:
Grants for the Arts**

Barnardo's: Looked After
Children and Young People

**Big Lottery Fund: Family
Learning Grant**

Bradford Council
Neighbourhood Services

British Waterways

Buttershaw Christian
Family Centre

Calderdale LINK

Cape UK

Care Quality Commission

City of Bradford Metropolitan
and District Council (CBMDC)

**CBMDC: Integrated
Youth Support**

CBMDC: Adult Mental
Health Fund

CBMDC: Adult Services

CBMDC: Community
Funding Unit

**CBMDC: Culture, Tourism
and Sport**

CBMDC: Local Ward Fund

CBMDC: Ward Investment Fund

Charities Aid Foundation

Community Voices Grant

Crisis

Kirklees Council

Manningham Healthy
Living Initiative

Media Trust

Newlands Local Enterprise

NHS Bradford and Airedale

Sure Start Children's Centres
North and East Halifax

Thackley Urban Village

The Co-operative Fund

The Steel Charitable Trust

The University of
Central Lancashire

Youth Music

Youth Opportunities Fund

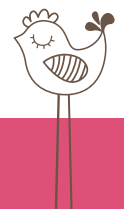


Special Thanks to our Major Funders:

Arts Council England

Big Lottery Fund: Family Learning Grant

City of Bradford Metropolitan and District
Council: Community Funding Unit



Artworks Creative Communities



Address:

Delius Arts and Cultural Centre, 29 Great Horton Road, Bradford, BD7 1AA

Tel:

01274 256 919

Fax:

01274 256 920

Email:

info@artworkscreative.org.uk

Website:

www.artworkscreative.org.uk

Looking to the Future

2010/11 was probably one of the toughest years for the voluntary sector, with cuts biting at every angle. Artworks are proud to have survived, and even thrived in these difficult times. Thanks to funding from Grants for the Arts and the Transition Fund, we are making our organisation even stronger to ensure we can continue to bring lasting change to communities most in need. We are looking forward to a vibrant future in our new building, The Delius Arts and Cultural Centre, which will see the launch of the long awaited Youth Arts Academy in partnership with PiPeLine Productions. We are also now able to offer great rates for hiring a truly amazing building. We hope to see you in the near future.

For further details about hiring a space at the Delius Arts and Cultural Center please contact Susan Eardley:

Tel: 01274 256 921

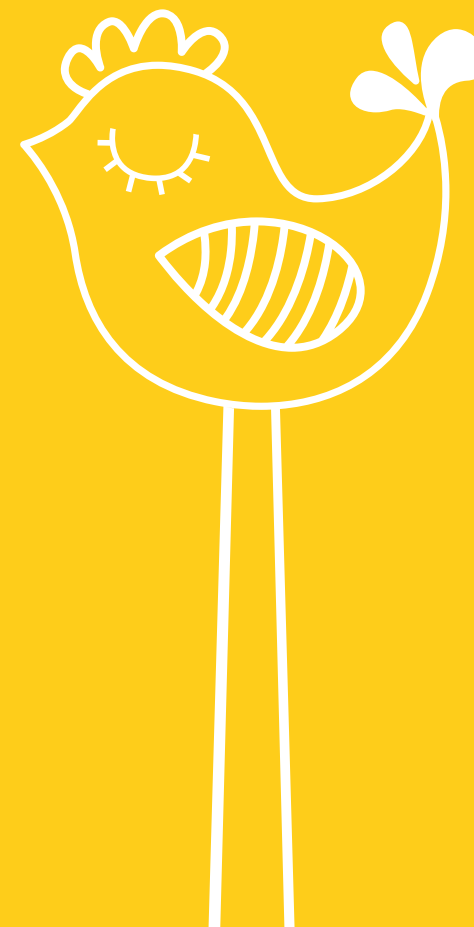
Email: susan@artworkscreative.org.uk



A hands on approach to creating change

In memory of

We would like to pay tribute to our long standing Board member Adrian McDonald from Last Cawthra Feather who sadly passed away after a battle with cancer in March 2011. Adrian was an amazing character and was always a fantastic trustee for us here at Artworks, even during his illness. He is greatly missed by all staff and trustees.



Printed on FSC Accredited paper